



explosion proof expertise



# Our major activities

Consulting

Engineering

Sourcing

Manufacturing

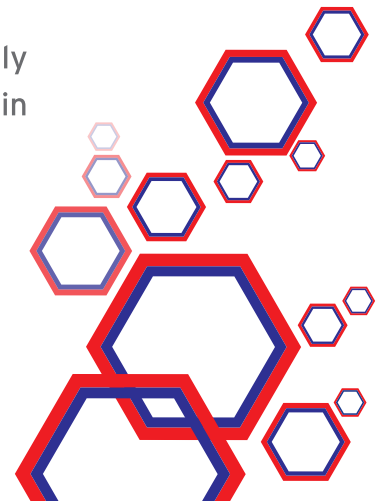


# We are

a team of qualified professionals with hands on experience for more than two decades in Explosion Proof and Intrinsically Safe products for ATEX, UL, IECEx- classified areas.

At SPEXA, we realise and understand that facility safety within hazardous areas is of the utmost importance and are able to offer a variety of explosion proof and intrinsically safe (I.S.) products which help prevent industrial fires and accidents.

Our Engineers could support you in selecting the most technically suitable and cost effective products and solutions available within the best achievable lead times, for Hazardous Areas.



With high standards of safety and business ethics, we are proud to be at your service in providing easy to install, safe, cost effective and durable personalized protection solutions.

SPEXA is the Sole distributor in GCC for **Nuova ASP, ABB group**  
**Thomas and Betts Heat Trace UK**



## We Offer

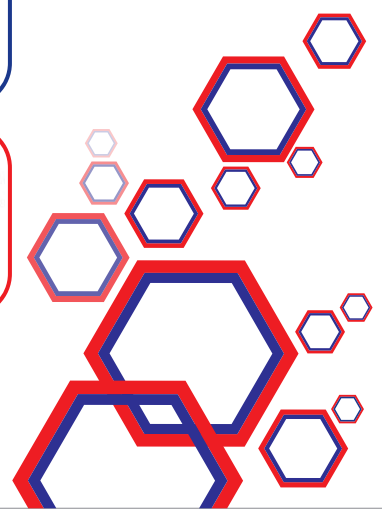
### EXPLOSION PROOF LIGHTING FIXTURES

(Zone 1 - 2 - 21 -22, Class-1,2, Div-1,2, Ex d IP 66/67)

### FLUORESCENT LIGHTING FIXTURES

This lighting fixtures can be fitted with double bi-pin fluorescent tube. Specially indicated for highly corrosive environments and marine applications. Material OC: Copper-free aluminum alloy body and cover. Borosilicate glass tube and Body in GRP (glass reinforced polyester) resin Transparent diffuser in antistatic polycarbonate also available.

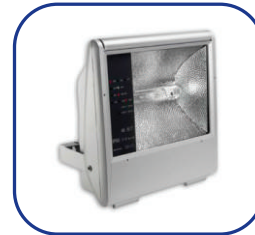
- II 2 GD Exe- Ex d IIC  
IP 66, suitable for ZONE 1-2-21-22
- Voltage:  
110V -240V
- Lamps Range  
18 W  
36W  
58W
- Options  
1xFluorescent tube,  
2xFluorescenttubes  
Emergency Backup (1 to 3 hour) also available
- LED options also available



## FLOODLIGHTS

This floodlight normally used for in-door and out-door illumination of areas which Requires wide beam light.

- **II 3GD Ex nR IIC**  
 ZONE 2-22  
 II 2 GD Exd IIB + H2  
 IP 66, suitable for  
 ZONE 1-2-21-22
- **Lamps Range**  
 400W (HPMV, MH, HPSV)  
 250W(HPMV, MH, HPSV)  
 150W(HPMV, MH, HPSV)
- **LED Options also available**



## WELL GLASS LIGHT FIXTURES

This lighting fixture is normally used for indoor and outdoor illumination areas which requires concentrated, diffuse or ambient light

- **II 2 GD Ex d IIC**  
 IP 66, suitable for ZONE 1-2-21-22
- **Lamps Range**  
 400W (HPMV, MH, HPSV)  
 250W (HPMV, MH, HPSV)  
 150W (175 MH)  
 100W (125 HPMV)
- **Mounting Accessories**  
 Wall mounting  
 Pendant mounting  
 Ceiling mounting
- **LED Type also Available**



## EXIT LIGHT

This compact model has been designed as emergency light source. Equipped with different sign boards, it can be conveniently used for Emergency or danger warnings.

- II 2 GD Ex d IIB + H2  
IP 66, suitable for ZONE 1-2-21-22
- Types  
Maintained  
Non maintained
- LED Type also Available



## EXPLOSION PROOF CONTROL STATIONS

### ALUMINIUM ENCLOSURE

- II 2 GD Ex d IICIP 66, suitable for ZONE 1-2-21-22  
II 2 GD Ex de IICIP 66, suitable for ZONE 1-2-21-22
- Types  
Pilot Light for indications  
Push Button for start stop  
Emergency Push button



GRP (glass reinforced polyester) resin body and cover

- II 2 GD Ex ed IICIP 66, suitable for ZONE 1-2-21-22



### AISI 316L ENCLOSURE FOR CONTROL STATIONS

- II 2 GD Ex de IIC IP 66, suitable for ZONE 1-2-21-22

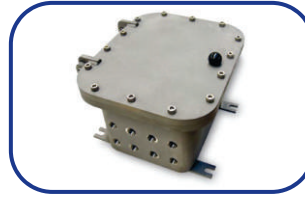


## EXPLOSION PROOF ENCLOSURE

### STAINLESS STEEL JUNCTION BOXES

Stainless steel AISI 316L body and cover. Hardware in stainless steel, AISI 316 standard

- II 2 GD Ex d IIB + H2 IP66, suitable for ZONE 1-2-21-22
- II 2 GD Ex e IP66, suitable for ZONE 1-2-21-22



### GRP JUNCTION BOXES

GRP (glass reinforced polyester) resin body and cover.

- II 2 GD Ex e IICIP 66, suitable for ZONE 1-2-21-22



### ALUMINIUM JUNCTION BOXES

Copper-free aluminium alloy body and cover.

- II 2 GD Ex d IIB + H2IP 66, suitable for ZONE 1-2-21-22
- II 2 GD Ex e IIC IP 66, suitable for ZONE 1-2-21-22



### CAST IRON JUNCTION BOXES

Cast Iron body and cover

- II 2 GD Ex d IIB + H2IP 66, suitable for ZONE 1-2-21-22



## EXPLOSION PROOF RECEPTACLE SOCKET OUTLET

Copper-free aluminium alloy body and cover.

- II 2 GD Ex d IIC IP 66, suitable for ZONE 1-2-21-22

GRP (glass reinforced polyester) resin body and cover

- II 2 GD Ex de IIC IP 66, suitable for ZONE 1-2-21-22



## EXPLOSION PROOF CABLE GLANDS

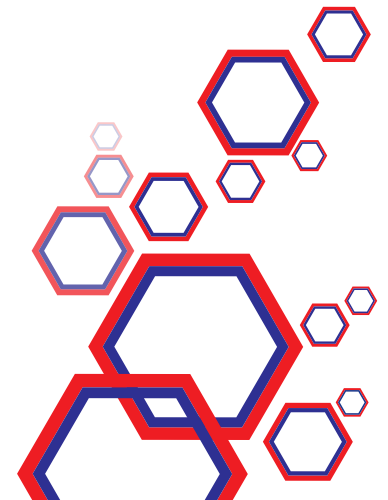
These cable glands are used for connecting Ex equipment

- II 2 GD Ex d IICIP 66/68, suitable for ZONE 1-2-21-22  
II 2 GD Ex d IICIP 66, suitable for ZONE 1-2-21-22

- Categories:  
Armored  
Unarmored  
Barrier

- Options  
NPT  
Metric

- Materials  
Nickel plated brass  
Brass  
Stainless steel  
Polyamid.





## ADAPTORS AND REDUCERS

- II 2 GD Ex d IICIP 66, suitable for ZONE 1-2-21-22

### Types

Nickel plated brass  
Brass  
Stainless steel



## CONDUIT FITTINGS

- II 2 GD Ex d IICIP 66, suitable for ZONE 1-2-21-22

### Types

Nickel plated brass  
Brass  
Stainless steel  
Polyamid



## PRODUCTS FOR INDUSTRIAL APPLICATION

### PLUGS AND SOCKET

Combinational Socket panel  
Industrial Plug and Sockets

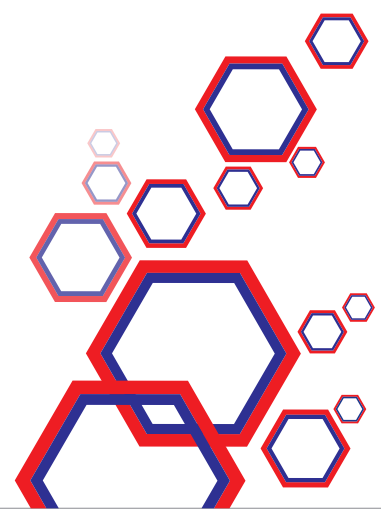


## INDUSTRIAL LIGHT FIXTURES

- Led bars
- Recessed mount lights
- Street lights tunnel lights



## INDUSTRIAL ENCLOSURE





We are committed to providing customized solutions for:

- Gas & Dust Hazardous Zones
- Explosive environments
- Marine applications
- Petro-Chemical plants





# Discussions help!

Let us work together towards finding solutions through discussions and brain storming:  
We encourage our potential customers to get in touch with our Engineering Team.  
Listening to your requirements, our team could develop and propose personalized solutions.

## Are you ready?

Reach us by mail | [info@spexaelectrical.com](mailto:info@spexaelectrical.com)

Reach us on phone | +971 4 3360242

Reach us physically | GPRS cordيناتes

Reach us by post | P O Box. 237383, Dubai - UAE

